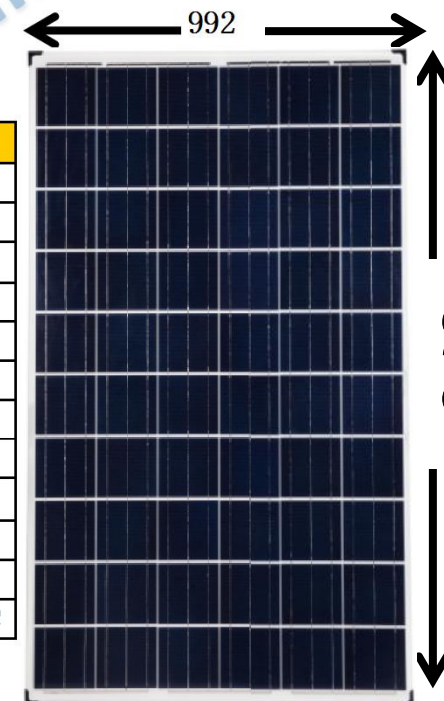


PRODUCT SPECIFICATION

Type Of Module				JCN-P265
Maximum Power (W)				265
Tolerance (%)				± 3%
Open Circuit Voltage (V)				37.5
Maximum Power Voltage (V)				29.93
Maximum Power Current (A)				8.85
Short Circuit Current (A)				9.7
Module Efficiency (%)				16
Solar Cell Efficiency (%)				18.6
Series Fuse Rating (A)				15
Terminal Box				IP65
Maximum system voltage (V)				DC1000
Operating Temperature(°C)				-40°C ---85°C



PRODUCT FEATURE

- Bypass diode minimizes the power drop by shade.
- The conversion efficiency of solar cell is above 19%.
- White tempered glass ,EVA resin,weather proof film and anodized aluminum frame to provide efficient protection from the severest environmental conditions.
- Waterproof.Perfect for grid applications.
- Product guarantee 5 years.

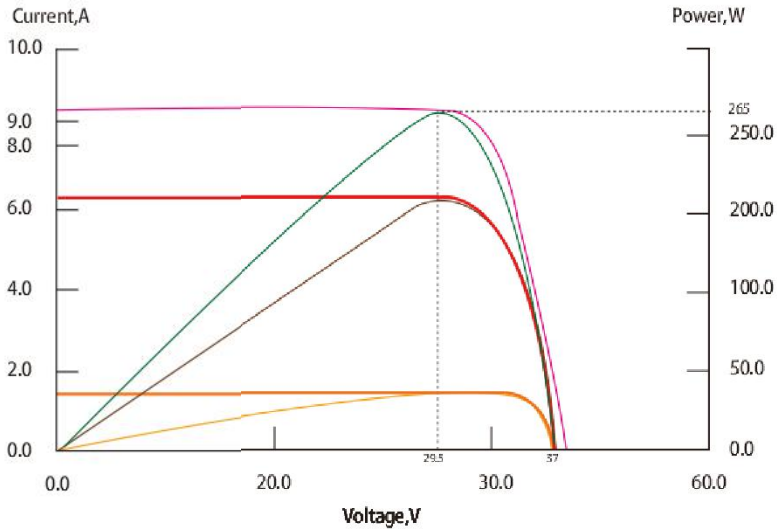
Quality Assurance

- Electrical Insulation test
- Damp heat Test
- Outdoor exposure test
- Robustness of terminations test
- Hot-spot endurance test
- Wet leakage current test
- UV-exposure
- Mechanical load test
- Thermal cycling test
- Hail impact test
- Humidity freeze test
- Bypass diode thermal test



Electrical Characteristics

Current-Voltage & Power-Voltage characteristics various irradiance levels



Electric Performance Typical Performance Characteristics

Short Circuit Current Temperature Coefficient	mA/C	+2.5
Open Circuit Voltage Temperature Coefficient	V/C	-0.147
Maximum Power Temperature Coefficient	%/C	-0.4
Performance Warranty : 90%output , 12 years 80%output , 25 years		

Physical Specifications

Size: 1670*992*6mm

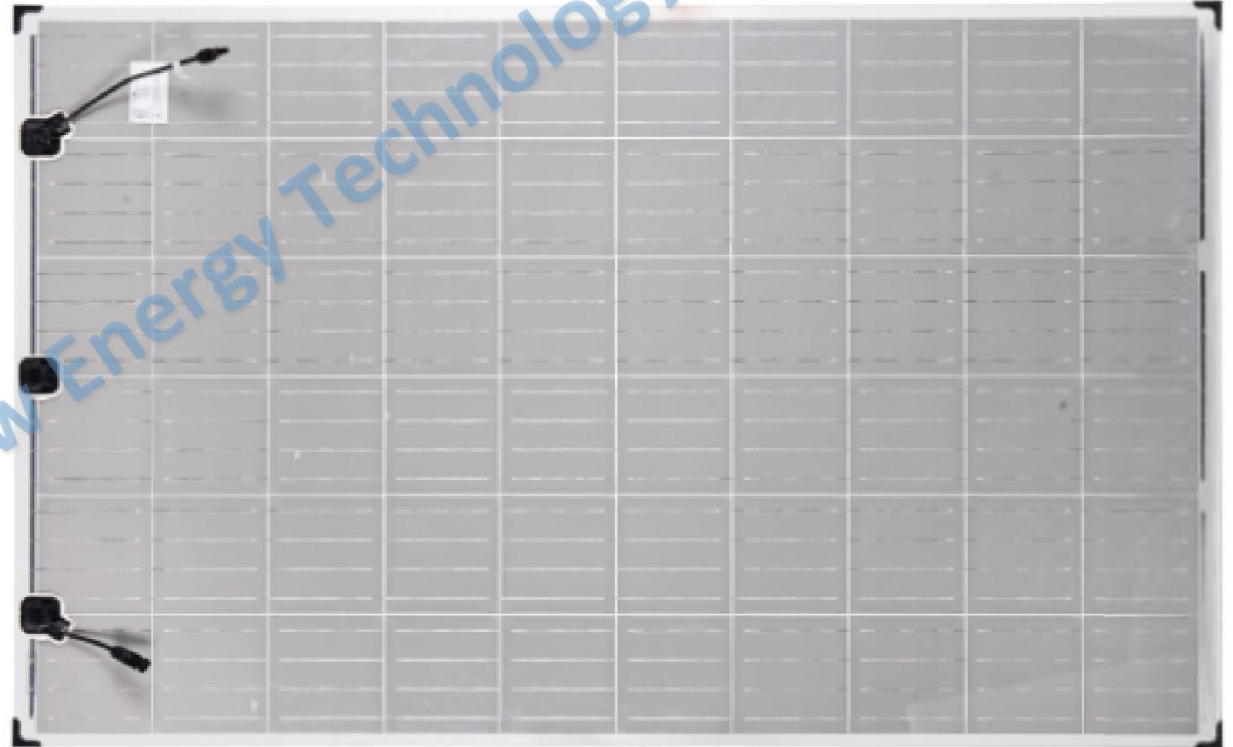
Weight: 27KG/PCS

Packing :

Loading Capacity:

200pcs/ 20' Container

440 pcs/ 40' Container



SHENZHEN JCN NEW ENERGY CO.,LTD.

Add 1: No.5, Dayang Road, 2nd Industry Zone, Yulv community, Gongming Street, Guangming New District, Shenzhen
Add 2: Buildings 6, CSST Industrial Park, Gongchang Rd., Zhenmei Village, Guangming New District, Shenzhen, Guangdong China

Tel:+86- 755 27094995 -8020

Fax: +86-755 27164829

Website: www.jcnsolar.com www.jcnsolar.com.cn Email:belly@solarszled.com

